

Dom 11B

Łączna powierzchnia: 110,07 m²



POZIOM 0

- | | |
|---------------------|----------------------|
| 1. Hol | 4.89 m ² |
| 2. Łazienka | 3.35 m ² |
| 3. Salon z aneksem | 38.30 m ² |
| 4. Pom. techn-gosp. | 6.83 m ² |

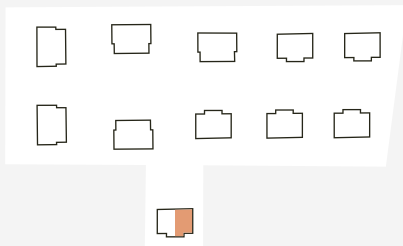
SUMA **53.37 m²**

POZIOM 1

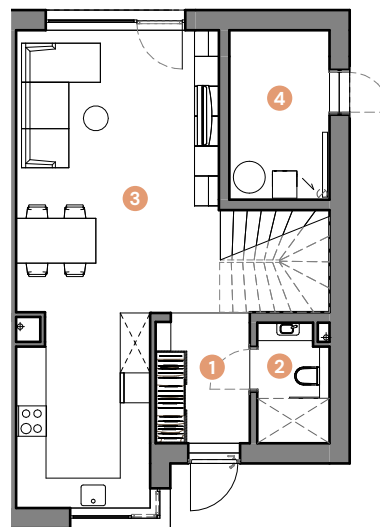
- | | |
|--------------|----------------------|
| 5. Hol | 5.23 m ² |
| 6. Schody | 4.04 m ² |
| 7. Pokój 1 | 10.73 m ² |
| 8. Pokój 2 | 10.15 m ² |
| 9. Pokój 3 | 11.53 m ² |
| 10. Pokój 4 | 10.09 m ² |
| 11. Łazienka | 4.93 m ² |

SUMA **56,70 m²**

Ogród: 244 m²



POZIOM 0



POZIOM 1

